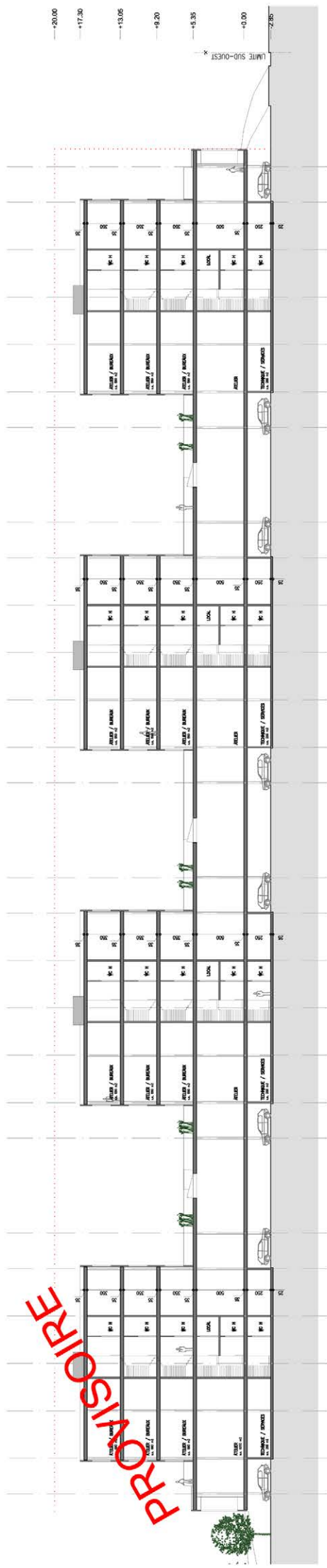


PROVISoire



COUPE LONGITUDINALE



FACADE NORD-OUEST

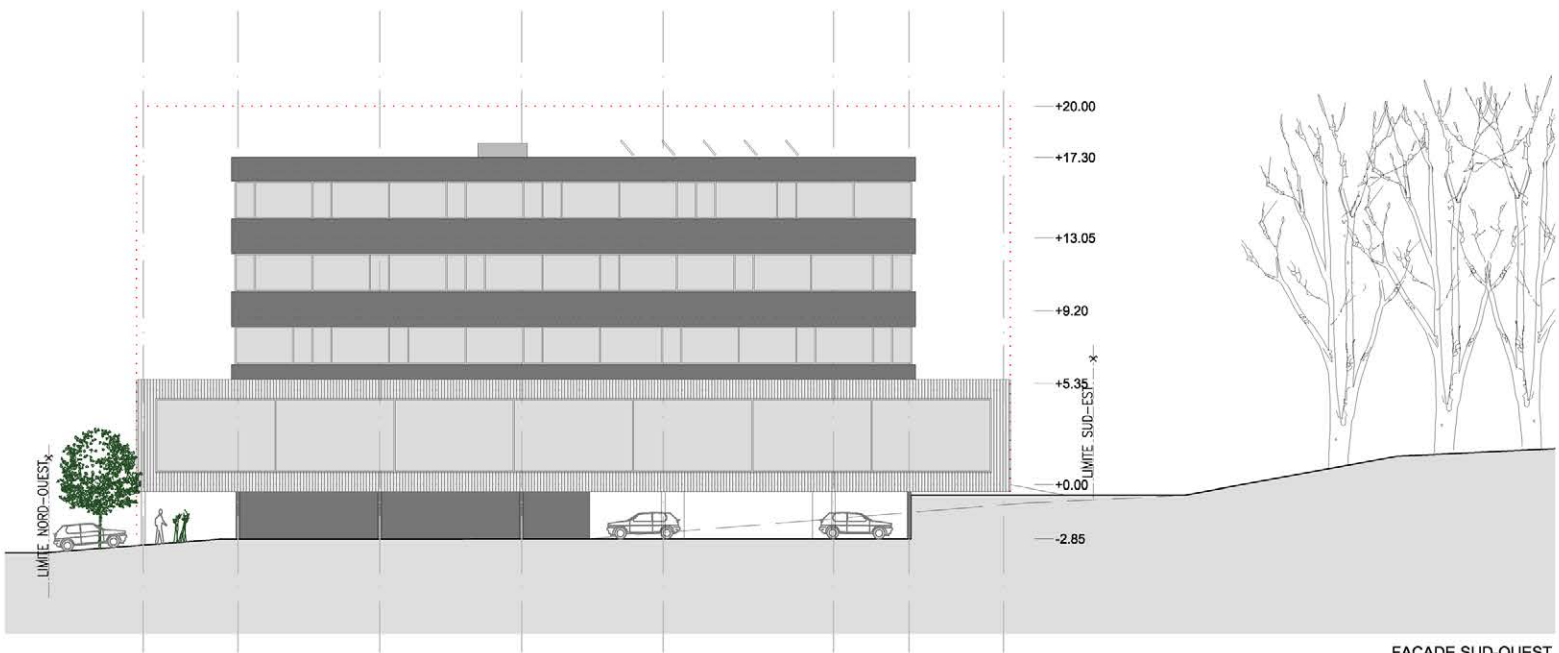


FACADE SUD-EST

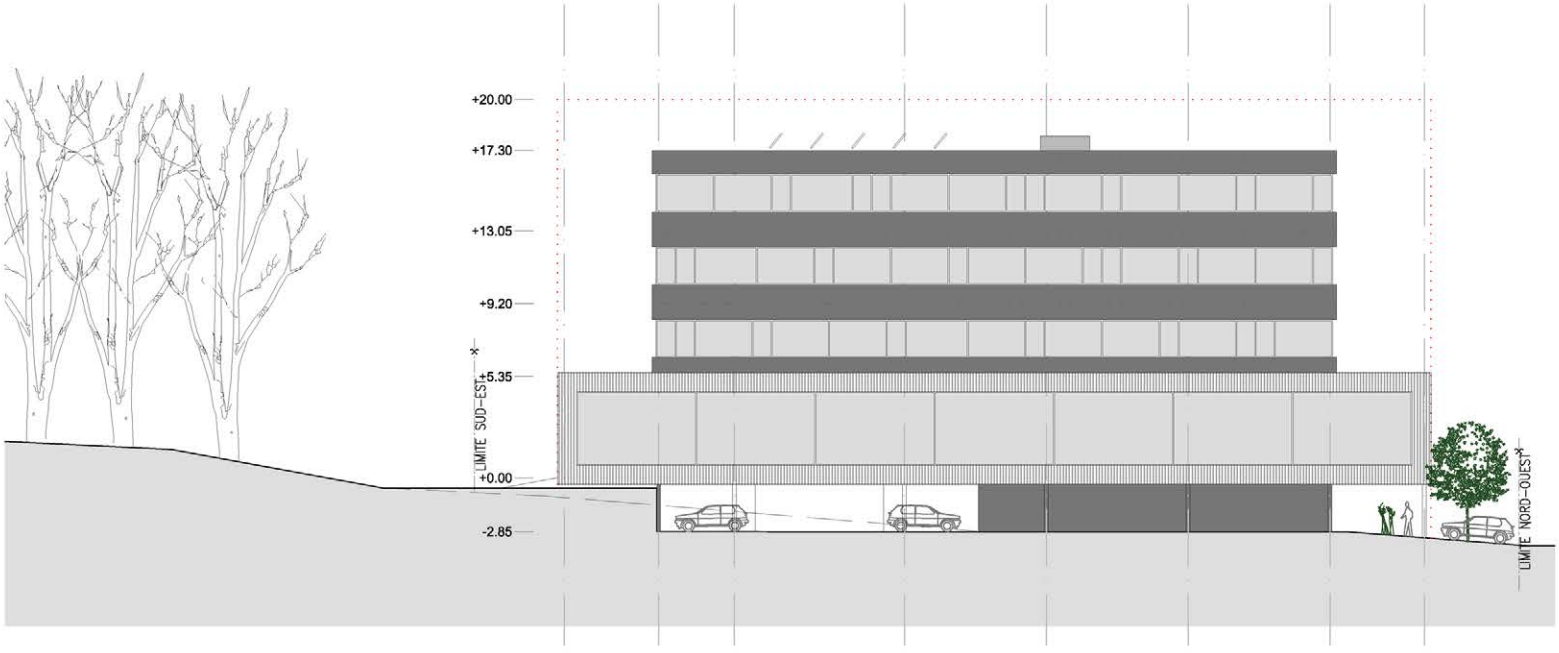
PROVISOIRE



COUPE TRANSVERSALE



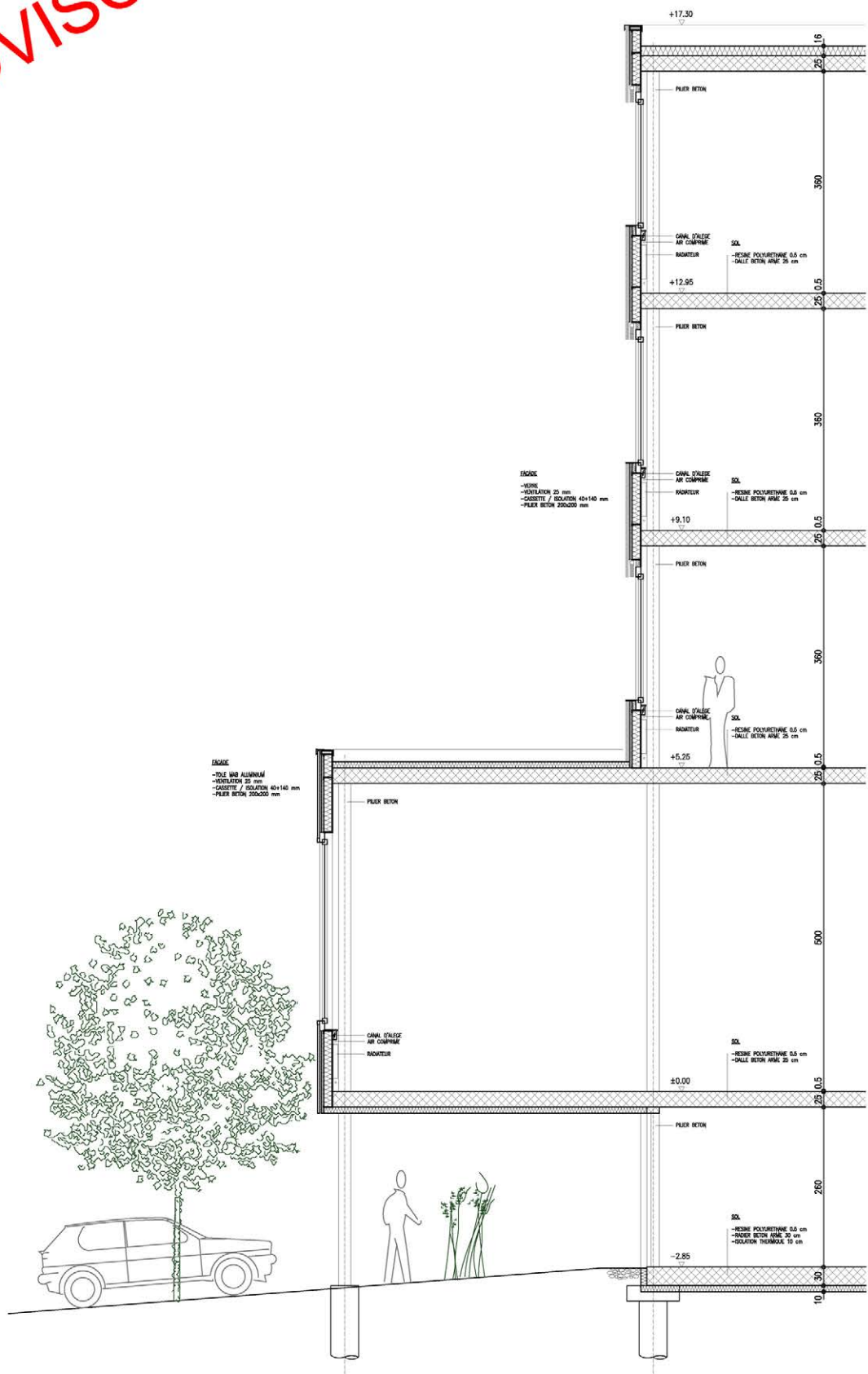
FAÇADE SUD-OUEST



FAÇADE NORD-EST

pierre liechti architectes
srl 1703 BIENNE

PROVISOIRE





PROVISORÉ

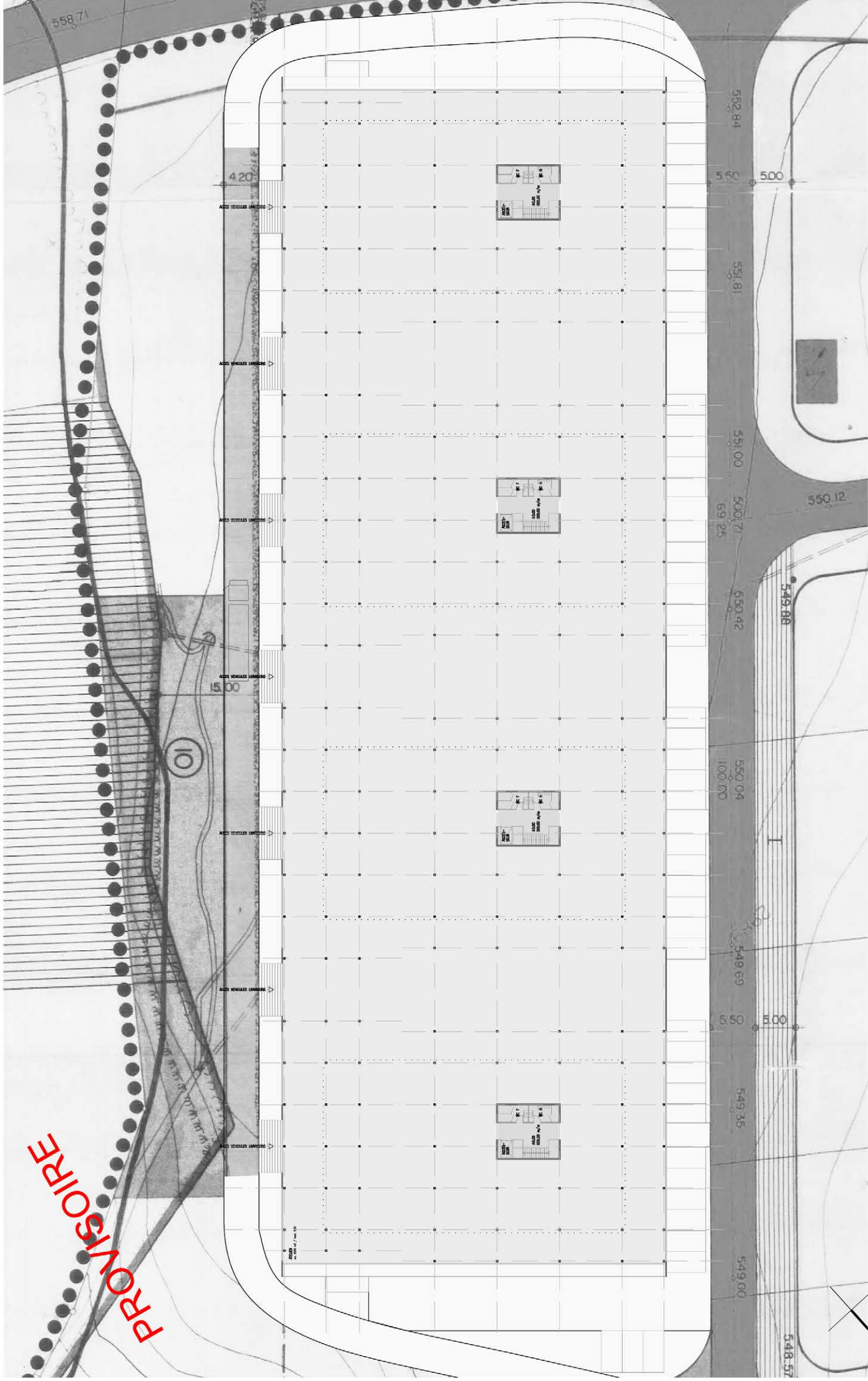
SOUS-SOL

pierre liechti architectes

CONCEPT GENERAL
PIERRE LIECHTI ARCHITECTES dipl. SIA HES SWB, BIENNE

TECHNO POOL MOUTIER
Construction d'un bâtiment industriel multifonctions, 2740 Moutier

PROVISoire

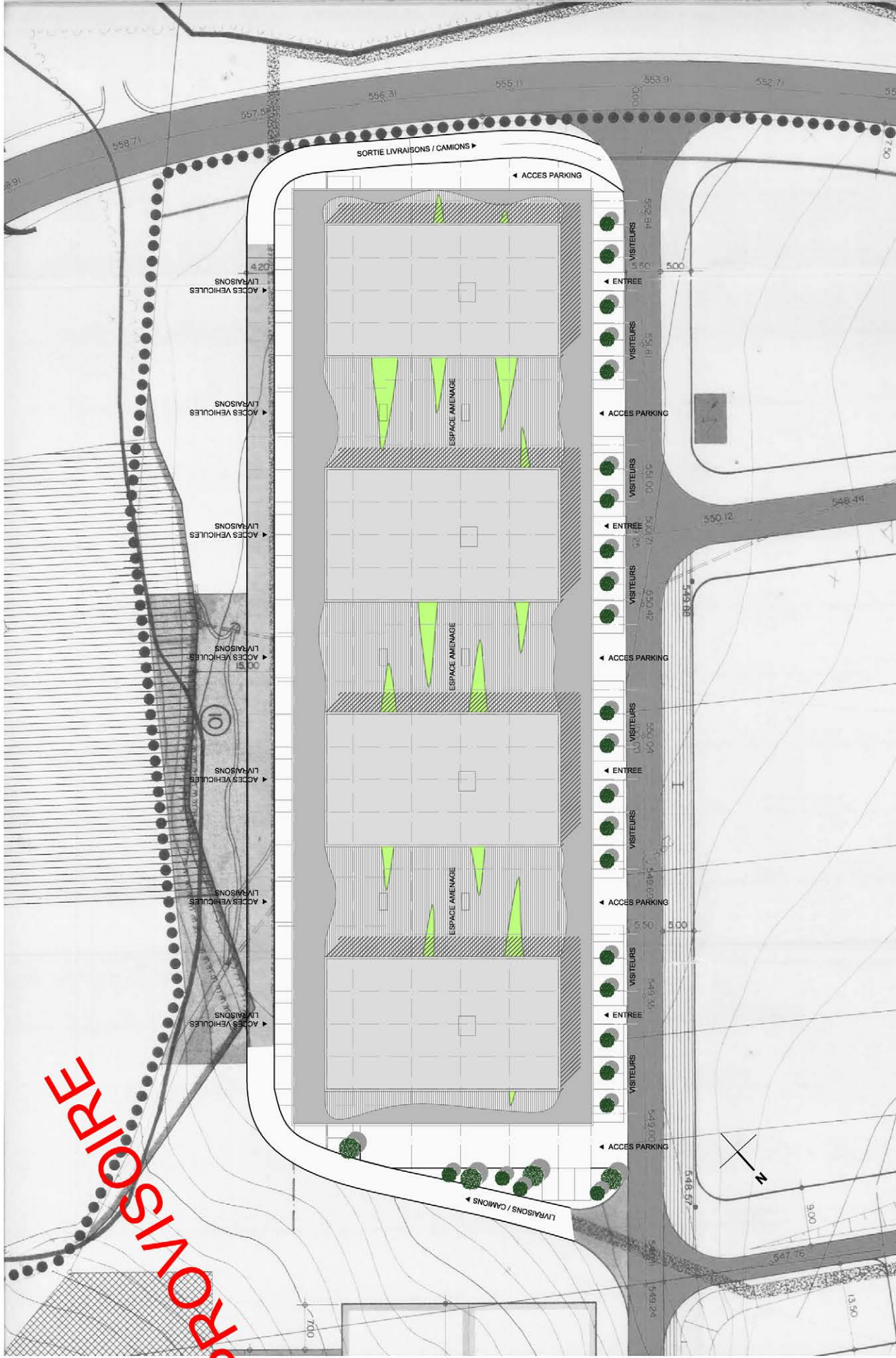


REZ-DE-CHAUSSEE

pierre liechti architectes

CONCEPT GENERAL
PIERRE LIECHTI ARCHITECTES dipl. SIA HES SWB, BIENNE

"TECHNO POOL MOUTIER"
Construction d'un bâtiment industriel multifonctions, 2740 Moutier

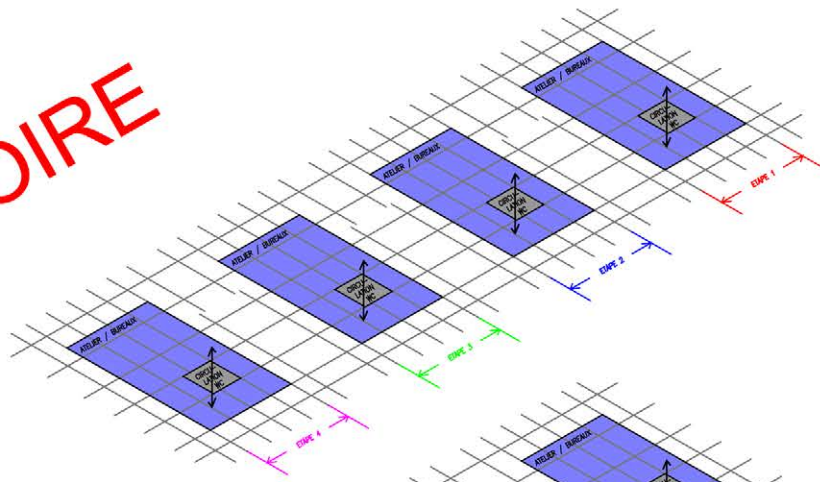


PROVISoire

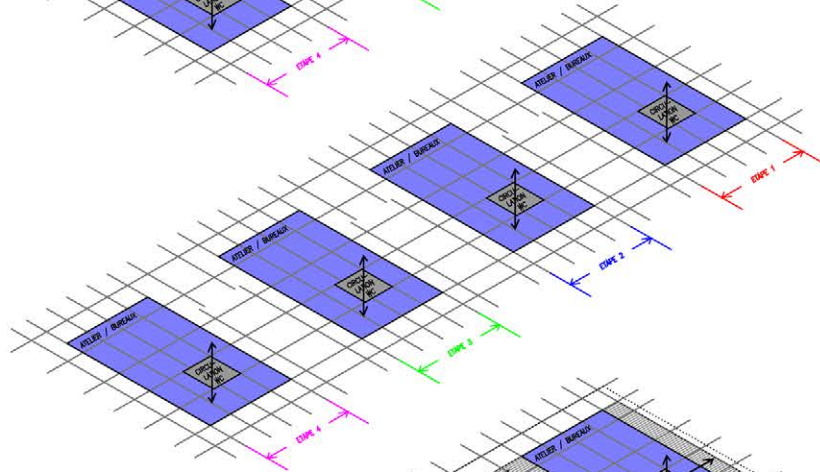
SITUATION

PROVISOIRE

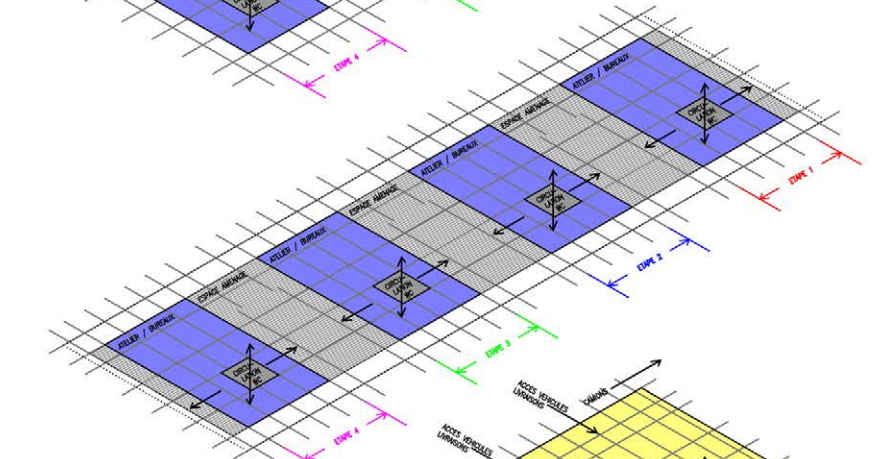
ETAGE 3
ATELIER / BUREAU
4.4. 2720 m²



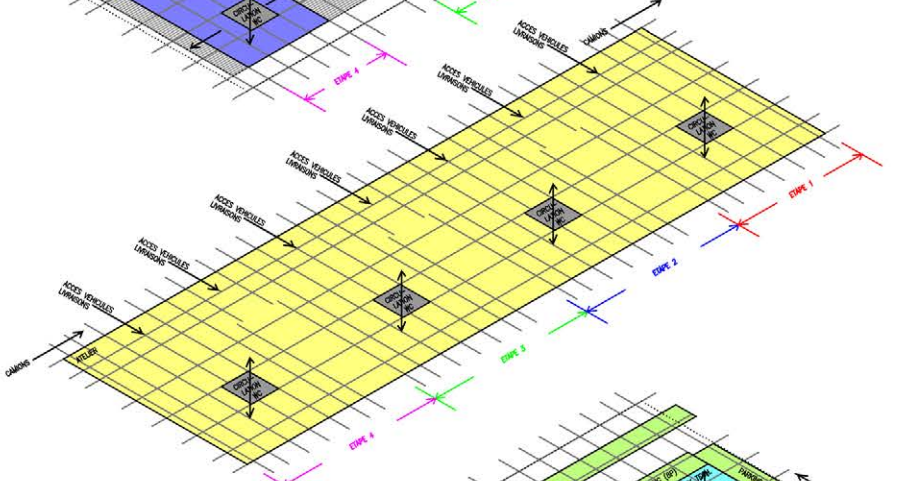
ETAGE 2
ATELIER / BUREAU
4.4. 2720 m²



ETAGE 1
ATELIER / BUREAU
4.4. 2720 m²
ESPACE AMENAGE
4.4. 2116 m²



REF. DE CHAUSSÉE
ATELIER
4.4. 620 m²



SOL - SOL
LOCALS TECHNIQUES / RECEPTION
4.4. 288 m²
PARKING
516 PLACES



- LEGENDE
- RECEPTION
 - ATELIER
 - ATELIER / BUREAU
 - CIRCULATIONS
 - ESPACE AMENAGE
 - LOCALS TECHNIQUE
 - PARKING
 - CIRCULATIONS HORIZONTALES
 - CIRCULATIONS VERTICALES

ETAPE 4

ETAPE 3

ETAPE 2

ETAPE 1

ETAPE 1:

ATELIER: 1'620 M2
 ATELIER /
 BUREAUX: (3 X 650): 1'950 M2
 STOCKAGE: 380 M2
TOTAL: 3'950 M2

ETAPE 2:

ATELIER: 1'620 M2
 ATELIER /
 BUREAUX: (3 X 650): 1'950 M2
 STOCKAGE: 380 M2
TOTAL: 3'950 M2

ETAPE 3:

ATELIER: 1'620 M2
 ATELIER /
 BUREAUX: (3 X 650): 1'950 M2
 STOCKAGE: 380 M2
TOTAL: 3'950 M2

ETAPE 4:

ATELIER: 1'320 M2
 ATELIER /
 BUREAUX: (3 X 650): 1'950 M2
 STOCKAGE: 380 M2
TOTAL: 3'650 M2

TOTAL: 15'500 M2

VARIANTE A

SCHEMA DES ETAPES

